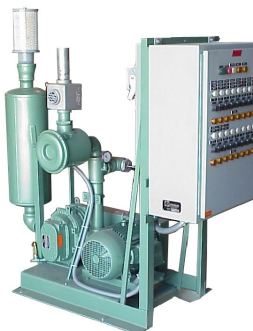




*Discover the  
Possibilities*

# INLET FILTER ASSEMBLIES/ EXPOSED FILTERS



## TABLE OF CONTENTS

**FILTER ASSEMBLIES:** Durable weatherproof housings and ample surface area provide long lasting filtration. Industrial, Severe & Extreme duty models in stock. Stainless Steel filters available.

- F Series:
 

Small Compact	1/2" to 3" BSPT	pg. 2
Compact	3" to 6" BSPT	pg. 3
Big Boy	DN80 to DN150 FLG	pg. 4
	DN200 to DN300 FLG	pg. 5

**EXPOSED/OPEN FILTERS:** Very cost effective filtration solution. Element is exposed for optimal airflow and minimal pressure drop. Industrial, Severe & Extreme duty models in stock. Stainless Steel filters available.

- FT Series:
 

Small Compact	1/2" to 3" BSPT	pg. 6
Compact	3" to 6" BSPT	pg. 7
Big Boy	DN80 to DN150 FLG	pg. 8
	DN200-300 FLG	pg. 9

**SPINMEISTER™ EXTREME DUTY FILTER Assemblies:** Ideal for highly dirty areas when a precleaner is combined with an Inlet Filter.

- SM Series pg. 10

**REPLACEMENT PARTS/ACCESSORIES** pg. 11

**REPLACEMENT ELEMENTS** pg. 12

FILTER ASSEMBLIES  
F, FT, SpinMeister™ Series

AFUS-0309



# SMALL COMPACT INLET FILTERS

"F" Series 1/2" - 3" BSPT

## APPLICATIONS & EQUIPMENT

- ♦ Industrial & Severe Duty
- ♦ Piston Compressors
- ♦ Screw Compressors
- ♦ Blowers - Side Channel & Roots
- ♦ Hydraulic Breathers – fine filtration
- ♦ Engines
- ♦ Construction\Contractor Industry
- ♦ Workshop
- ♦ Medical\Dental Industry
- ♦ Pneumatic Conveying
- ♦ Waste Water Aeration
- ♦ Sparging

## FEATURES & SPECIFICATIONS

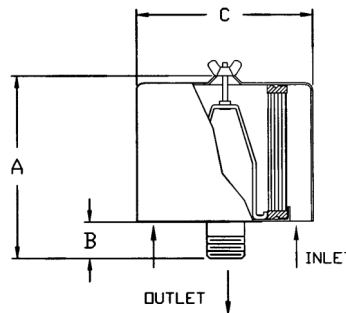
- ♦ Fully drawn weatherhood - no welds to rust or vibrate apart
- ♦ Low entry velocity air gap between base and cover
- ♦ Heavy gauge base with low pressure drop outlet pipe and center bracket design
- ♦ Durable carbon steel construction with baked enamel finish and powder coated weatherhood
- ♦ Polyester: 99%+ removal efficiency standard to 5 micron
- ♦ Paper: 99%+ removal efficiency standard to 2 micron
- ♦ Interchangeable media: Polyester, Paper, HEPA
- ♦ Several element sizes available per given connection (safety factor)
- ♦ Temp (continuous): min -26°C (-15°F) max 104°C (220°F)
- ♦ Filter change out differential: 255-380 mm H<sub>2</sub>O over initial delta P
- ♦ Pressure drop graphs available upon request

## OPTIONS (Inquiries Encouraged)

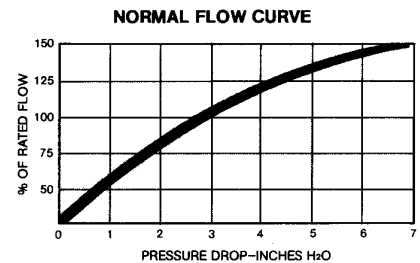
- ♦ Various media available
- ♦ 1/8" tap holes
- ♦ Pressure Drop Indicator
- ♦ Available in **Stainless Steel**
- ♦ Epoxy coated housings
- ♦ Custom connections, NPT

## CONFIGURATION

## DRAWING



Dimension tolerance  $\pm 6$  mm



**I = Industrial Duty S = Severe Duty**

	with Polyester Element	with Paper Element	BSPT Outlet	DIMENSIONS - mm			Rated Flow m <sup>3</sup> /h			Approx. Wt. Kg
				A	B	C	Piston	Screw, Blower, Fan	Element Rating	
I	F-15-050	F-14-050	1/2"	102	38	152	17	17	60	0.68
I	F-15-075	F-14-075	3/4"	102	38	152	34	43	60	0.77
I	F-15-100	F-14-100	1"	102	38	152	43	60	60	0.86
S	F-19P-100	F-18P-100	1"	168	41	152	60	94	170	1.4
I	F-19P-126	F-18P-126	1 1/4"	168	41	152	94	119	170	1.4
I	F-19P-151	F-18P-151	1 1/2"	168	41	152	119	145	170	1.4
I	F-31P-201	F-30P-201	2"	184	57	197	145	230	332	2
S	F-231P-201	F-230P-201	2"	311	57	254	230	230	510	5
I	F-31-251	F-30-251	2 1/2"	191	64	197	170	332	332	2
S	F-231P-251	F-230P-251	2 1/2"	318	64	254	332	332	510	6
I	F-231P-301	F-230P-301	3"	330	76	254	510	510	510	6

Note: Model offerings and design parameters may change without notice.

Solberg – Discover the Possibilities

FILTER ASSEMBLIES  
F, FT, SpinMeister™ Series



# COMPACT INLET FILTERS

"F" Series 3" - 6" BSPT

## APPLICATIONS & EQUIPMENT

- ♦ Industrial & Severe Duty
- ♦ Engines
- ♦ Waste Water Aeration
- ♦ Blowers - Side Channel & Roots
- ♦ Fans
- ♦ Sparging
- ♦ Piston Compressors
- ♦ Construction Industry
- ♦ Factory Air
- ♦ Screw Compressors
- ♦ Medical
- ♦ Hydraulic Breathers – fine filtration
- ♦ Pneumatic Conveying

## FEATURES & SPECIFICATIONS

- ♦ Fully drawn weatherhood - no welds to rust or vibrate apart
- ♦ Interchangeable media: Polyester, Paper, HEPA
- ♦ Heavy gauge base with low pressure drop outlet pipe and center bracket design
- ♦ Several element sizes available per given connection (safety factor)
- ♦ Durable carbon steel construction with baked enamel finish and powder coated weatherhood
- ♦ Temp (continuous): min -26°C (-15°F) max 104°C (220°F)
- ♦ Low entry velocity air gap between base and cover
- ♦ Filter change out differential: 255-380 mm H<sub>2</sub>O over initial delta P
- ♦ 1/8" tap hole
- ♦ Pressure drop graphs available upon request
- ♦ Polyester: 99%+ removal efficiency standard to 5 micron
- ♦ Paper: 99%+ removal efficiency standard to 2 micron

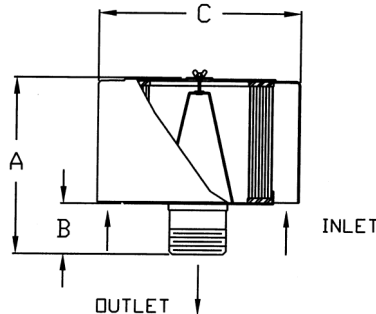
## OPTIONS (Inquiries Encouraged)

- ♦ Various media available
- ♦ Available in **Stainless Steel**
- ♦ Custom connections, NPT
- ♦ Pressure Drop Indicator
- ♦ Epoxy coated housings

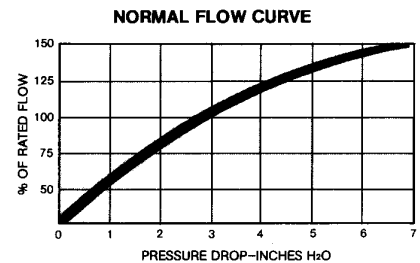
## CONFIGURATION



## DRAWING



Dimension tolerance ± 6 mm



**I = Industrial Duty S = Severe Duty E = Extreme Duty**

	with Polyester Element	with Paper Element	BSPT Outlet	DIMENSIONS -mm			Rated Flow m <sup>3</sup> /h			Approx. Wt. Kg
				A	B	C	Piston	Screw, Blower, Fan	Element Rating	
S	F-235P-301	F-234P-301	3"	330	76	254	510	510	970	7
S	F-245P-301	F-244P-301	3"	330	76	406	510	510	1500	9
E	F-275P-301	F-274P-301	3"	330	76	406	510	510	1870	11
I	F-235P-401	F-234P-401	4"	356	102	254	510	885	970	7
S	F-245P-401	F-244P-401	4"	356	102	406	765	885	1500	10
E	F-275P-401	F-274P-401	4"	356	102	406	765	885	1870	12
I	F-245P-501	F-244P-501	5"	356	102	406	850	1360	1500	10
S	F-275P-501	F-274P-501	5"	356	102	406	1105	1360	1870	12
I	F-275P-601	F-274P-601	6"	381	127	406	1105	1870	1870	13

Note: Model offerings and design parameters may change without notice.

Solberg – Discover the Possibilities



# COMPACT INLET FILTERS

"F" Series DN80 - DN150 PN10 Pattern Flange

## APPLICATIONS & EQUIPMENT

- Industrial & Severe Duty
- Blowers - Side Channel & Roots
- Piston Compressors
- Screw Compressors
- Hydraulic Breathers – fine filtration
- Engines
- Fans
- Construction Industry
- Medical
- Pneumatic Conveying
- Waste Water Aeration
- Sparging
- Factory Air

## FEATURES & SPECIFICATIONS

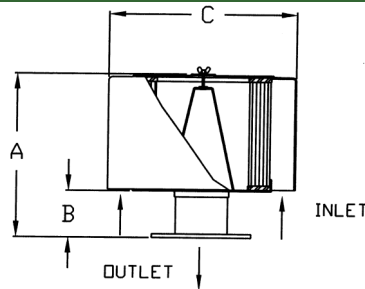
- Fully drawn weatherhood - no welds to rust or vibrate apart
- Heavy gauge base with low pressure drop outlet pipe and center bracket design
- Durable carbon steel construction with baked enamel finish and powder coated weatherhood
- Low entry velocity air gap between base and cover
- 1/8" tap hole
- Polyester: 99%+ removal efficiency standard to 5 micron
- Paper: 99%+ removal efficiency standard to 2 micron
- Interchangeable media: Polyester, Paper, HEPA
- Several element sizes available per given connection (safety factor)
- Temp (continuous): min -26°C (-15°F) max 104°C (220°F)
- Filter change out differential: 255-380 mm H<sub>2</sub>O over initial delta P
- Pressure drop graphs available upon request

## OPTIONS (Inquiries Encouraged)

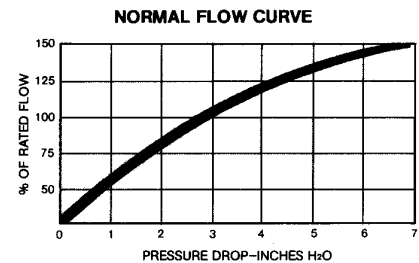
- Various media available
- Available in **Stainless Steel**
- Epoxy coated housings
- Custom connections, NPT

## CONFIGURATION

## DRAWING



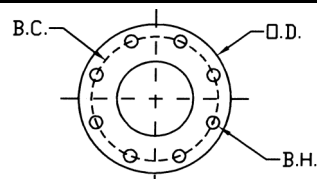
Dimension tolerance  $\pm 6$  mm



I = Industrial Duty S = Severe Duty E = Extreme Duty

	with Polyester Element	with Paper Element	Flange Outlet	DIMENSIONS - mm			Rated Flow m <sup>3</sup> /h			Approx. Weight kg
				A	B	C	Piston	Blower Fan	Element Rating	
S	F-245P-DN80	F-244P-DN80	3"	330	76	406	510	510	1500	7
E	F-275P-DN80	F-274P-DN80	3"	330	76	406	510	510	1870	10
I	F-235P-DN100	F-234P-DN100	4"	356	102	254	510	885	970	9
S	F-245P-DN100	F-244P-DN100	4"	356	102	406	765	885	1500	12
E	F-275P-DN100	F-274P-DN100	4"	356	102	406	765	885	1870	14
I	F-245P-DN125	F-244P-DN125	5"	356	102	406	850	1360	1500	12
S	F-275P-DN125	F-274P-DN125	5"	356	102	406	1105	1360	1870	14
I	F-275P-DN150	F-274P-DN150	6"	381	127	406	1105	1870	1870	15

PN10 Pattern Flange	Dimensions - mm			No. of Holes	Thickness Flg mm
	O.D.	B.C.	B.H.		
DN 80	200	160	18	8	20
DN100	220	180	18	8	20
DN125	250	210	18	8	22
DN150	285	240	22	8	22



Note: Model offerings and design parameters may change without notice.

Solberg – Discover the Possibilities



# “BIG BOY” INLET FILTERS

"F" Series DN200-DN300 PN 10 Pattern Flange

## APPLICATIONS & EQUIPMENT

- ♦ Industrial & Severe Duty
  - ♦ Blowers - Side Channel & Roots
  - ♦ Piston Compressors
  - ♦ Screw Compressors
  - ♦ Hydraulic Breathers – fine filtration
- ♦ Engines
  - ♦ Fans
  - ♦ Construction Industry
  - ♦ Medical
  - ♦ Pneumatic Conveying
- ♦ Waste Water Aeration
  - ♦ Sparging
  - ♦ Cement
  - ♦ Power Plants
  - ♦ Factory Air

## FEATURES & SPECIFICATIONS

- ♦ Heavy gauge base with low pressure drop outlet pipe and center bracket design
  - ♦ Durable carbon steel construction with baked enamel finish and powder coated weatherhood
  - ♦ Low entry velocity air gap between base and cover
  - ♦ 1/8" tap hole
  - ♦ Polyester: 99%+ removal efficiency standard to 5 micron
  - ♦ Paper: 99%+ removal efficiency standard to 2 micron
- ♦ Interchangeable media: Polyester, Paper, HEPA
  - ♦ Several element sizes available per given connection (safety factor)
  - ♦ Temp (continuous): min -26°C (-15°F) max 104°C (220°F)
  - ♦ Filter change out differential: 255-380 mm H<sub>2</sub>O over initial delta P
  - ♦ Pressure drop graphs available upon request

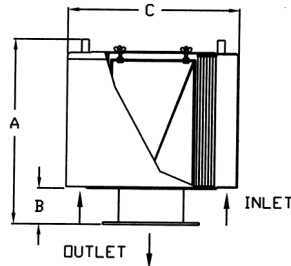
## OPTIONS (Inquiries Encouraged)

- ♦ Various media available
  - ♦ Pressure Drop Indicator
- ♦ Available in **Stainless Steel**
  - ♦ Epoxy coated housings
- ♦ Custom connections, NPT
  - ♦ Single Barrel Lg Flow Mega Boy Filters

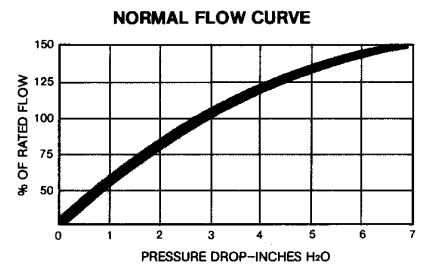
## CONFIGURATION



## DRAWING



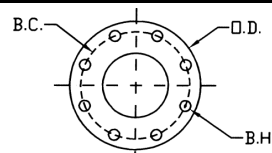
Dimension tolerance  $\pm 6$  mm



**I = Industrial Duty S = Severe Duty E = Extreme Duty**

	with Polyester Element	with Paper Element	Flange Outlet	DIMENSIONS -mm			Rated Flow m <sup>3</sup> /h			Approx. Wt. Kg
				A	B	C	Piston	Screw, Blower, Fan	Element Rating	
I	F-377P-DN200	F-376P-DN200	DN200	584	152	572	2450	3060	3105	31
S	F-385P-DN200	F-384P-DN200	DN200	584	152	724	2450	3060	5605	56
E	F-485P-DN200	F-484P-DN200	DN200	787	152	724	3060	3060	8000	62
I	F-385P-DN250	F-384P-DN250	DN250	584	152	724	3060	5610	5610	59
S	F-485P-DN250	F-484P-DN250	DN250	787	152	724	4420	5610	8000	64
E	F-685P-DN250	F-384P(2)-DN250	DN250	965	152	724	4900	5610	11220	74
I	F-385P-DN300	F-384P-DN300	DN300	584	152	724	4420	5610	5610	61
S	F-485P-DN300	F-484P-DN300	DN300	787	152	724	4420	7990	8000	70
E	F-685P-DN300	F-384P(2)-DN300	DN300	965	152	724	5950	7990	11220	79
E	F-485P(2)-DN300	F-484P(2)-DN300	DN300	1346	152	724	7345	7990	16000	88

PN10 Pattern Flange	Dimensions - mm			No. of Holes	Thickness Flg. mm
	O.D.	B.C.	B.H.		
DN200	340	295	22	8	24
DN250	395	350	22	12	26
DN300	445	400	22	12	26



Note: Model offerings and design parameters may change without notice.

Solberg – Discover the Possibilities



# SMALL COMPACT EXPOSED ELEMENT FILTERS

"FT" Series 1/2" - 3" BSPT

## APPLICATIONS & EQUIPMENT

- ♦ Industrial & Severe Duty
  - ♦ Piston Compressors
  - ♦ Screw Compressors
  - ♦ Blowers - Side Channel & Roots
  - ♦ Hydraulic Breathers – fine filtration
- ♦ Engines
  - ♦ Construction
  - ♦ Workshop
  - ♦ Medical/Dental Industry
  - ♦ Pneumatic Conveying
- ♦ Waste Water Aeration
  - ♦ Sparging
  - ♦ Cement
  - ♦ Power Plants
  - ♦ Factory Air

## FEATURES & SPECIFICATIONS

- ♦ Exposed element for **optimal** air flow and low restriction
  - ♦ Heavy gauge base with low pressure drop outlet pipe and center bracket design
  - ♦ Durable carbon steel construction with baked enamel finish
  - ♦ Polyester: 99%+ removal efficiency standard to 5 micron
  - ♦ Paper: 99%+ removal efficiency standard to 2 micron
- ♦ Interchangeable media: Polyester, Paper, HEPA
  - ♦ Several element sizes available per given connection (safety factor)
  - ♦ Temp (continuous): min -26°C (-15°F) max 104°C (220°F)
  - ♦ Filter change out differential: 255-380 mm H<sub>2</sub>O over initial delta P
  - ♦ Pressure drop graphs available upon request

## OPTIONS (Inquiries Encouraged)

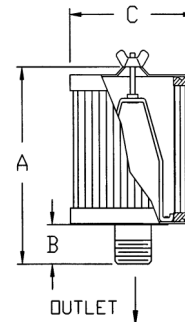
- ♦ 1/8" tap holes
  - ♦ Pressure Drop Indicator
- ♦ Available in **Stainless Steel**
  - ♦ Epoxy coated housings
- ♦ Various media available
  - ♦ Custom connections, NPT

## CONFIGURATION



**I = Industrial Duty S = Severe Duty**

## DRAWING



Dimension tolerance ± 6 mm

	with Polyester Element	with Paper Element	BSPT Outlet	DIMENSIONS - mm			Rated Flow m <sup>3</sup> /h			Approx. Wt. Kg
				A	B	C	Piston	Screw, Blower, Fan	Element Rating	
I	MIN025	----	1/4"	76	19	44	12	12	12	0.23
I	MIN038	----	3/8"	76	19	44	12	12	12	0.23
I	FT-15-050	FT-14-050	1/2"	102	38	114	17	17	60	0.54
I	FT-15-075	FT-14-075	3/4"	102	38	114	34	43	60	0.59
I	FT-15-100	FT-14-100	1"	102	38	114	43	60	60	0.63
S	FT-19P-100	FT-18P-100	1"	168	41	114	60	94	170	0.81
I	FT-19P-126	FT-18P-126	1-1/4"	168	41	114	94	119	170	0.81
I	FT-19P-151	FT-18P-151	1-1/2"	168	41	114	119	145	170	0.90
I	FT-31P-201	FT-30P-201	2"	184	57	152	145	230	332	1.35
S	FT-231P-201	FT-230P-201	2"	318	57	152	230	230	332	3
I	FT-31P-251	FT-30P-251	2-1/2"	191	64	152	170	332	332	2
S	FT-231P-251	FT-230P-251	2-1/2"	324	64	152	332	332	510	3
I	FT-231P-301	FT-230P-301	3"	330	76	152	510	510	510	4

Note: Model offerings and design parameters may change without notice.

Solberg – Discover the Possibilities



# COMPACT EXPOSED ELEMENT FILTERS

"FT" Series 3" - 6" BSPT

## APPLICATIONS & EQUIPMENT

- ♦ Industrial & Severe Duty
- ♦ Piston Compressors
- ♦ Screw Compressors
- ♦ Blowers - Side Channel & Roots
- ♦ Hydraulic Breathers – fine filtration
- ♦ Engines
- ♦ Fans
- ♦ Construction
- ♦ Medical
- ♦ Pneumatic Conveying
- ♦ Waste Water Aeration
- ♦ Sparging
- ♦ Power Plants
- ♦ Factory Air

## FEATURES & SPECIFICATIONS

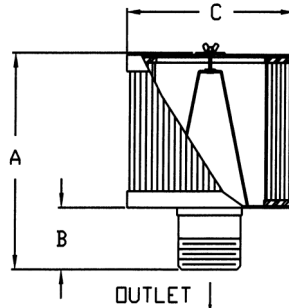
- ♦ Exposed element for **optimal** air flow and low restriction
- ♦ Heavy gauge base with low pressure drop outlet pipe and center bracket design
- ♦ Durable carbon steel construction with baked enamel finish
- ♦ 1/8" tap hole
- ♦ Polyester: 99%+ removal efficiency standard to 5 micron
- ♦ Paper: 99%+ removal efficiency standard to 2 micron
- ♦ Interchangeable media: Polyester, Paper, HEPA
- ♦ Several element sizes available per given connection (safety factor)
- ♦ Temp (continuous): min -26°C (-15°F) max 104°C (220°F)
- ♦ Filter change out differential: 255-380 mm H<sub>2</sub>O over initial delta P
- ♦ Pressure drop graphs available upon request

## OPTIONS (Inquiries Encouraged)

- ♦ Various media available
- ♦ Pressure Drop Indicator
- ♦ Available in **Stainless Steel**
- ♦ Epoxy coated housings
- ♦ Custom connections, NPT

## CONFIGURATION

## DRAWING



Dimension tolerance  $\pm 6$  mm

**I = Industrial Duty S = Severe Duty E = Extreme Duty**

	with Polyester Element	with Paper Element	BSPT Outlet	DIMENSIONS - mm			Rated Flow m <sup>3</sup> /h			Approx. Wt. Kg
				A	B	C	Piston	Screw, Blower, Fan	Element Rating	
S	FT-235P-301	FT-234P-301	3"	330	76	203	510	510	970	6
S	FT-245P-301	FT-244P-301	3"	330	76	254	510	510	1500	9
E	FT-275P-301	FT-274P-301	3"	330	76	305	510	510	1870	10
I	FT-235P-401	FT-234P-401	4"	356	102	203	510	885	970	8
S	FT-245P-401	FT-244P-401	4"	356	102	254	765	885	1500	9
E	FT-275P-401	FT-274P-401	4"	356	102	305	765	885	1870	11
I	FT-245P-501	FT-244P-501	5"	356	102	254	850	1360	1500	9
S	FT-275P-501	FT-274P-501	5"	356	102	305	1105	1360	1870	11
I	FT-275P-601	FT-274P-601	6"	381	127	305	1105	1870	1870	12

Note: Model offerings and design parameters may change without notice.

Solberg – Discover the Possibilities



# COMPACT EXPOSED ELEMENT FILTERS

"FT" Series DN80-DN150 PN10&16 Pattern Flange

## APPLICATIONS & EQUIPMENT

- ♦ Industrial & Severe Duty
  - ♦ Piston Compressors
  - ♦ Screw Compressors
  - ♦ Blowers - Side Channel & Roots
  - ♦ Hydraulic Breathers – fine filtration
- ♦ Engines
  - ♦ Fans
  - ♦ Construction
  - ♦ Medical
  - ♦ Pneumatic Conveying
- ♦ Waste Water Aeration
  - ♦ Sparging
  - ♦ Power Plants
  - ♦ Factory Air

## FEATURES & SPECIFICATIONS

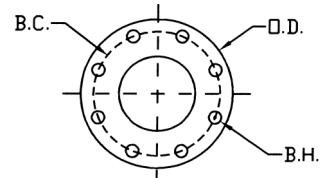
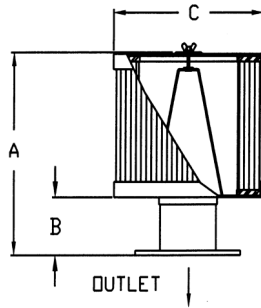
- ♦ Exposed element for **optimal** air flow and low restriction
  - ♦ Heavy gauge base with low pressure drop outlet pipe and center bracket design
  - ♦ Durable carbon steel construction with baked enamel finish
  - ♦ 1/8" tap hole
  - ♦ Polyester: 99%+ removal efficiency standard to 5 micron
  - ♦ Paper: 99%+ removal efficiency standard to 2 micron
- ♦ Interchangeable media: Polyester, Paper, HEPA
  - ♦ Several element sizes available per given connection (safety factor)
  - ♦ Temp (continuous): min -26°C (-15°F) max 104°C (220°F)
  - ♦ Filter change out differential: 255-380 mm H<sub>2</sub>O over initial delta P
  - ♦ Pressure drop graphs available upon request

## OPTIONS (Inquiries Encouraged)

- ♦ Various media available
  - ♦ Pressure Drop Indicator
- ♦ Available in **Stainless Steel**
  - ♦ Epoxy coated housings
- ♦ Custom connections, NPT

## CONFIGURATION

## DRAWING



Flange Orientation

Dimension tolerance ± 6 mm

**I = Industrial Duty S = Severe Duty E = Extreme Duty**

	with Polyester Element	with Paper Element	BSPT Outlet	DIMENSIONS - mm			Rated Flow m <sup>3</sup> /h			Approx. Wt. Kg
				A	B	C	Piston	Screw, Blower, Fan	Element Rating	
S	FT-235P-DN80	FT-234P-DN80	DN80	330	76	203	510	510	970	6
S	FT-245P-DN80	FT-244P-DN80	DN80	330	76	254	510	510	1500	9
E	FT-275P-DN80	FT-274P-DN80	DN80	330	76	305	510	510	1870	10
I	FT-235P-DN100	FT-234P-DN100	DN100	356	102	203	510	885	970	7
S	FT-245P-DN100	FT-244P-DN100	DN100	356	102	254	765	885	1500	9
E	FT-275P-DN100	FT-274P-DN100	DN100	356	102	305	765	885	1870	11
I	FT-245P-DN125	FT-244P-DN125	DN125	356	102	254	850	1360	1500	11
S	FT-275P-DN125	FT-274P-DN125	DN125	356	102	305	1105	1360	1870	13
I	FT-275P-DN150	FT-274P-DN150	DN150	381	127	305	1105	1870	1870	14

PN10 Pattern Flange	Dimensions - mm			No. of Holes	Thickness Flg mm
	O.D.	B.C.	B.H.		
DN 80	200	160	18	8	20
DN100	220	180	18	8	20
DN125	250	210	18	8	22
DN150	285	240	22	8	22

Note: Model offerings and design parameters may change without notice.



# “BIG BOY” EXPOSED ELEMENT FILTERS

“FT” Series DN200-DN300 PN10 Pattern Flange

## APPLICATIONS & EQUIPMENT

- ♦ Industrial & Severe Duty
  - ♦ Piston Compressors
  - ♦ Screw Compressors
  - ♦ Blowers - Side Channel & Roots
  - ♦ Hydraulic Breathers – fine filtration
- ♦ Engines
  - ♦ Fans
  - ♦ Construction
  - ♦ Medical
  - ♦ Pneumatic Conveying
- ♦ Waste Water Aeration
  - ♦ Sparging
  - ♦ Cement
  - ♦ Power Plants
  - ♦ Factory Air

## FEATURES & SPECIFICATIONS

- ♦ Exposed element for **optimal** air flow and low restriction
  - ♦ Heavy gauge base with low pressure drop outlet pipe and center bracket design
  - ♦ Durable carbon steel construction with baked enamel finish
  - ♦ 1/8” tap hole
  - ♦ Polyester: 99%+ removal efficiency standard to 5 micron
  - ♦ Paper: 99%+ removal efficiency standard to 2 micron
- ♦ Interchangeable media: Polyester, Paper, HEPA
  - ♦ Several element sizes available per given connection (safety factor)
  - ♦ Temp (continuous): min -26°C (-15°F) max 104°C (220°F)
  - ♦ Filter change out differential: 255-380 mm H<sub>2</sub>O over initial delta P
  - ♦ Pressure drop graphs available upon request

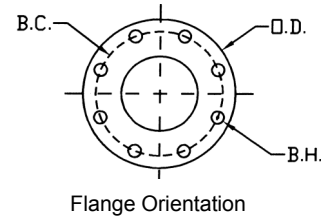
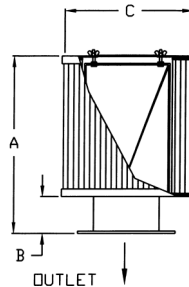
## OPTIONS (Inquiries Encouraged)

- ♦ Various media available
  - ♦ Pressure Drop Indicator
- ♦ Available in **Stainless Steel**
  - ♦ Epoxy coated housings
- ♦ Custom connections, NPT

## CONFIGURATION



## DRAWING



Dimension tolerance ± 6 mm

**I = Industrial Duty S = Severe Duty E = Extreme Duty**

			DIMENSIONS - mm			Rated Flow m <sup>3</sup> /h			Approx. Wt. Kg	
			A	B	C	Piston	Screw, Blower, Fan	Element Rating		
I	FT-377P-DN200	FT-376P-DN200	DN200	584	152	375	2450	3060	3105	29
S	FT-385P-DN200	FT-384P-DN200	DN200	584	152	502	2450	3060	5605	32
E	FT-485P-DN200	FT-484P-DN200	DN200	787	152	502	3060	3060	8000	34
I	FT-385P-DN250	FT-384P-DN250	DN250	584	152	502	3060	5610	5610	36
S	FT-485P-DN250	FT-484P-DN250	DN250	787	152	502	4420	5610	8000	38
E	FT-685P-DN250	FT-384P(2)-DN250	DN250	965	152	502	4900	5610	11220	43
I	FT-385P-DN300	FT-384P-DN300	DN300	584	152	502	4420	5610	5610	38
S	FT-485P-DN300	FT-484P-DN300	DN300	787	152	502	4420	7990	8000	41
E	FT-685P-DN300	FT-384P(2)-DN300	DN300	965	152	502	5950	7990	11220	45
E	FT-485P(2)-DN300	FT-484P(2)-DN300	DN300	1346	152	502	7345	7990	16000	54

PN10 Pattern Flange	Dimensions - mm			No. of Holes	Thickness Flg. mm
	O.D.	B.C.	B.H.		
DN200	340	295	22	8	24
DN250	395	350	22	12	26
DN300	445	400	22	12	26

Note: Model offerings and design parameters may change without notice.

Solberg – Discover the Possibilities



# SPINMEISTER™ INLET FILTERS

## For Pressure Systems, Extreme Duty Filtration

### "SM" Series

### APPLICATIONS & EQUIPMENT

- ♦ Screw Compressors
  - ♦ Engines
  - ♦ Blowers
  - ♦ Fans
- ♦ Grain Elevators
  - ♦ Cement Industry
  - ♦ Plastics Industry
- ♦ Wood Chip, Paper & Pulp Industries
  - ♦ Pneumatic Conveying Systems
  - ♦ Foundries

### FEATURES & SPECIFICATIONS

- ♦ **Extreme Duty Filtration** for high dust environments
- ♦ **Significantly Increases** the life of the filter element
- ♦ The centrifugal flow forces particulate through the side louver. It achieves 85% efficiency @ 15 micron or larger.
- ♦ The air stream then enters the lower chamber and is filtered by a 99+% efficient pleated element
- ♦ SpinMeister™ Precleaner is made of durable molded fiber filled composite material
- ♦ This is a configured product which enables unit to be modified to specific applications
- ♦ Filter housing has heavy gauge base with low pressure drop bracket and outlet pipe design
- ♦ Durable carbon steel housing construction
- ♦ All small compact filters have a seamless drawn housing
- ♦ Polyester: 99%+ removal efficiency standard to 5 micron
- ♦ Paper: 99%+ removal efficiency standard to 2 micron
- ♦ Temp (continuous): min -26°C (-15°F) max 104°C (220°F)
- ♦ Filter change out differential: 10"-15" H<sub>2</sub>O over initial delta P

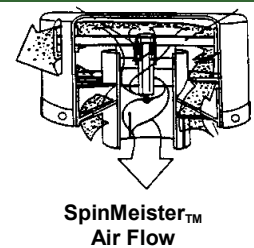
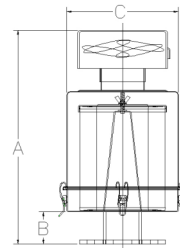
### OPTIONS (Inquiries Encouraged)

- ♦ Multiple Configurations Available
- ♦ SpinMeisters™ available in Polished Aluminum
- ♦ Vacuum Systems configurations
- ♦ Selected Housings available in **SS**
- ♦ Various Media for Element
- ♦ 1/8" taps for pressure drop indicators on selected models
- ♦ Multiple connection types

### CONFIGURATION

### DRAWING

### SCHEMATIC



SpinMeister™  
Air Flow

Dimension tolerance ± 6 mm

	Reference Only		Outlet	Connection Style	Reference Only Dimensions - mm			Rated Flow m <sup>3</sup> /h	Approx. Wt. Kg
	with Polyester Element	with Paper Element			A	B	C		
A	SM1.5-11-050	SM1.5-10-050	1/2"	BSPT	187	22	105	51	0.68
A	SM1.5-11-075	SM1.5-10-075	3/4"	BSPT	197	32	105	51	0.68
A	SM2-11-050	SM2-10-050	1/2"	BSPT	187	22	105	68	0.90
A	SM2-11-075	SM2-10-075	3/4"	BSPT	197	32	105	68	0.90
A	SM2-11-100	SM2-10-100	1"	BSPT	197	32	105	68	0.90
B	SM2-19P-100	SM2-18P-100	1"	BSPT	270	38	178	94	1.7
B	SM2-19P-126	SM2-18P-126	1-1/4"	BSPT	273	41	178	119	1.7
B	SM2-19P-151	SM2-18P-151	1-1/2"	BSPT	273	41	178	145	1.7
B	SM2-19P-201	SM2-18P-201	2"	BSPT	289	57	178	170	1.8
B	SM2-19P-251	SM2-18P-251	2-1/2"	BSPT	295	64	178	187	1.8
C	SM3-235P-301	SM3-234P-301	3"	BSPT	476	76	279	425	14
C	SM4-235P-301	SM4-234P-301	3"	BSPT	498	76	279	510	14
C	SM3-235P-401	SM3-234P-401	4"	BSPT	502	102	279	425	14
C	SM4-235P-401	SM4-234P-401	4"	BSPT	524	102	279	680	15
C	SM3-235P-DN100	SM3-234P-DN100	DN100	FLG	502	102	279	425	16
C	SM4-235P-DN100	SM4-234P-DN100	DN100	FLG	524	102	279	680	16
D	SM6-275P-DN100	SM6-274P-DN100	DN100	FLG	781	102	406	850	20
D	SM42-377P-DN125	SM42-376P-DN125	DN125	FLG	724	102	572	1360	40
D	SM62-377P-DN150	SM62-376P-DN150	DN150	FLG	775	127	572	1870	45
D	SM62-377P-DN200	SM62-376P-DN200	DN200	FLG	800	152	572	3060	46
D	SM63-385P-DN250	SM63-384P-DN250	DN250	FLG	775	152	724	4590	62
D	SM63-485P-DN300	SM63-484P-DN300	DN300	FLG	953	152	724	4590	73

Registered patent on SpinMeister.

Note: Model offerings and design parameters may change without notice.

Solberg – Discover the Possibilities



# STANDARD REPLACEMENT PARTS/ACCESSORIES

For All Filter Assemblies & Exposed Element Filters

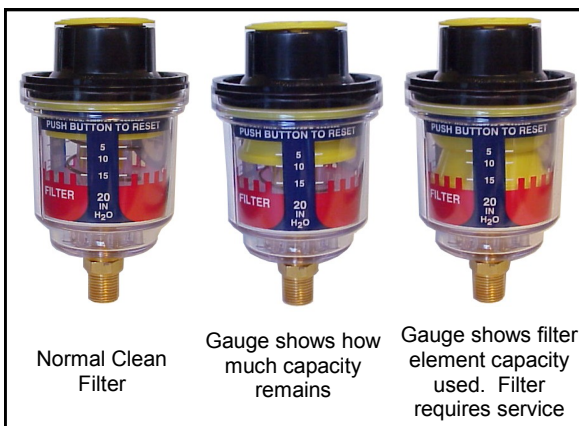
## REPLACEMENT PARTS

Parent Model F/FT-Element-Connection	Prefilter Model	Weatherhood/Top for F Series Model No.	Element Top for F Series Model No.	Top for FT Series Model No.	Wingnut(s)/ Lock Hex Nut(s) Model No.	Washer(s) Model No.
Model-15/14-xxx	PF14	WH6X2	N/A	T4500312	WN25X20	WR25X20
Model-19/18-xxx	PF18	WH6X5	N/A	T4500312	WN25X20	WR25X20
Model-31/30-xxx	PF30	WH7.625X5	N/A	T6000312	WN25X20	WR25X20
Model-231/230-xxx	PF230	WH10X10	N/A	T6000312	WN38X16	WR38X16
Model-235/234-xxx	PF234	WH10X10	N/A	T8000437	WN38X16	WR38X16
Model-245/244-xxx	PF244	WH16X10	N/A	T1000437	WN38X16	WR38X16
Model-275/274-xxx	PF274	WH16X10	N/A	T12000437	WN38X16	WR38X16
Model-375/374-xxx	PF374	WH16X16	N/A	T12000625	LHN50X13	WR50X13
Model-377/376-xxx	PF376	WH22.5X15	N/A	T14750625	LHN50X13	WR50X13
Model-385/384-xxx	PF384	WH28X15	N/A	T19750625	LHN50X13	WR50X13
Model-384(2)-xxx	PF384(2)	T28000625	T19750625	T19750625	LHN50X13	WR50X13
Model-485/484-xxx	PF484	WH28X24	N/A	T19750625	LHN50X13	WR50X13
Model-485(2)/484(2)-xxx	PF484(2)	T28000625	T19750625	T19750625	LHN50X13	WR50X13
Model-685-xxx	PF684	T28000625	T19750625	T19750625	LHN50X13	WR50X13

FILTER ASSEMBLIES  
F, FT, SpinMeister™ Series

## PRESSURE INDICATOR

Solberg's Filter Monitor Gauge shows the amount of filter element restriction and how much life the element has left. This is a convenient and inexpensive solution to receiving the maximum usage from every element.



Normal Clean Filter

Gauge shows how much capacity remains

Gauge shows filter element capacity used. Filter requires service

Part No: VG-020-013

Note: The monitor gauge has a 1/8" MPT connection. It is mounted either on the weatherhood or on the outlet pipe depending on the filter assembly. (Tap Hole Option Required)

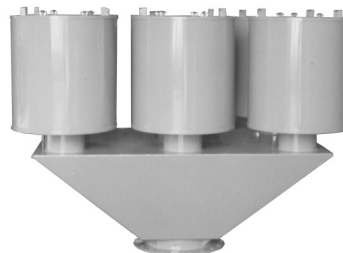
## "MEGA BOY" FILTER ASSEMBLIES

"Mega Boy" Filters are single barrel style filters that are available up to 13,600 m<sup>3</sup>/h and up to a 24" flange. It is perfect for space restricted areas while still needing a filter that can handle large air flows. Stainless Steel and epoxy coated housings also available. For more information ask for Datasheet EMGF.



## MULTIBARREL FILTER ASSEMBLIES

Multibarrel Filters are available up to a 30" flange and 42,500 m<sup>3</sup>/h. It is available in both box or trapezoid style manifold with either bottom or side outlets. Stainless Steel and epoxy coated housings also available. For more information ask for Brochure ESP



Bottom Outlet



Side Outlet

Note: Model offerings and design parameters may change without notice.

Solberg – Discover the Possibilities

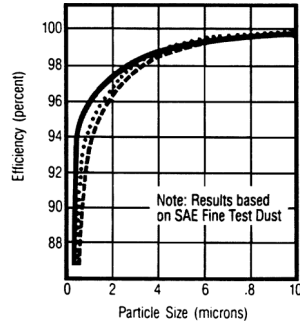


# REPLACEMENT ELEMENTS

## POLYESTER ELEMENTS

Particle Size vs. Filter Efficiency on polyester media at indicated face velocity:

- 275 m<sup>3</sup>/hr/m<sup>2</sup> media —————
- 550 m<sup>3</sup>/hr/m<sup>2</sup> media ..... (dotted)
- 825 m<sup>3</sup>/hr/m<sup>2</sup> media - - - - - (dashed)



- ♦ 99+% removal efficiency to 5 micron
- ♦ Reinforced with epoxy coated steel wire on both sides of cloth
- ♦ Washable - lukewarm water & mild detergent
- ♦ Dust loading capacity is increased 40 - 50% with polyurethane prefilter
- ♦ Temp (continuous): min -26°C (-15°F) max 104°C (220°F)
- ♦ Optimal sealing surface & design

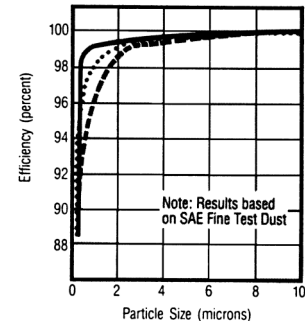
## ADVANTAGES

- ♦ Less maintenance
- ♦ More durable
- ♦ Moisture resistant
- ♦ Handles hot air and oil mist from unload cycle of reciprocating/piston compressor

## PAPER ELEMENTS

Particle Size vs. Filter Efficiency on paper media at indicated face velocity:

- 185 m<sup>3</sup>/hr/m<sup>2</sup> media —————
- 275 m<sup>3</sup>/hr/m<sup>2</sup> media ..... (dotted)
- 365 m<sup>3</sup>/hr/m<sup>2</sup> media - - - - - (dashed)

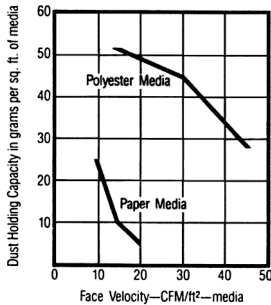


- ♦ 99+% removal efficiency to 2 micron
- ♦ Heavy duty industrial strength paper surrounded by heavy gauge galvanized expanded metal
- ♦ Dust loading capacity is increased 40 - 50% with polyurethane prefilter
- ♦ Temp (continuous): min -26°C (-15°F) max 104°C (220°F)
- ♦ Optimal sealing surface & design

## ADVANTAGES

- ♦ Optimal surface area per given size
- ♦ Higher efficiency than many alternative media
- ♦ Cost Effective

### Face Velocity vs. Dust Holding Capacity



### Legend

- B= Closed one end w/ Bolt hole, open on other end
- C= Closed one end, open on other end
- F= Felt gaskets on open end(s)
- G= Galvanized metal endcaps
- I= Injection molded santoprene
- M= Molded plastisol
- N= Neoprene gaskets on open end(s)
- R= Mixed Rubber/cork gasket on open ends
- T= Tin plated metal endcaps

For other media types please see element brochure, Bulletin EL or contact your representative for more information. Inquires encouraged.

Note: Model offerings and design parameters may change without notice.

Polyester	Paper	STD Endcap Features	DIMENSIONS - mm			Polyester Surface Area m <sup>2</sup>	Paper Surface Area m <sup>2</sup>	Rated Flow m <sup>3</sup> /h
			ID	OD	HT			
03	02	I	---	38	25	0.009	0.009	5
05	04	I	---	57	25	0.019	0.019	15
07	06	I	---	76	35	0.054	0.054	25
11	10	I	---	102	35	0.102	0.102	60
15	14	M	76	111	59	0.046	0.104	60
19P®	18P	M	76	111	121	0.14	0.28	170
31P	30P	M	92	146	121	0.21	0.58	335
231P	230P	M	92	146	241	0.42	1.1	510
825	824	TC	38	64	64	0.035	0.085	45
843	842	T	60	98	70	0.056	0.16	95
849	848	T	65	127	124	0.19	0.46	200
851	850	TR	89	149	219	0.42	1.3	495
879	878	TB	65	127	124	0.19	0.5	200
239	238	GBN	124	235	254	1.1	4.8	970
35P	34P	M	121	200	122	0.37	1.0	470
235P	234P	M	121	200	244	0.77	2.1	970
335P	334P	M	121	200	368	1.1	3.2	1360
245P	244P	GN   M	152	248	244	1.3	3.3	1500
345P	344P	GN	152	248	368	2.1	5.3	1870
275P	274P	GN	203	298	244	1.8	4.2	1870
375P	374P	GN	203	298	368	2.6	6.3	2550
377P	376P	GN	229	371	368	4.6	11.6	3105
385P	384P	GN	356	498	368	4.6	13.0	5610
485P	484P	GN	356	498	546	7.0	18.6	8000
685P	---	GN	356	498	724	9.3	--	11220

P= Polyurethane Prefilter

Dimension tolerance ± 6 mm