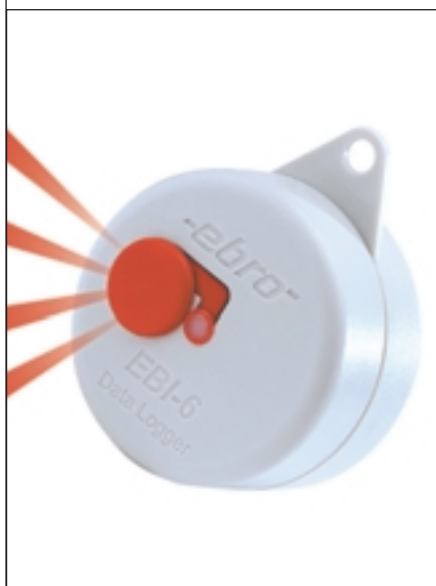


Temperature Data Logger

EBI-6



Technical Data

Type	EBI-6
Measuring range	-30 to +50°C
Accuracy	±0.8°C
Resolution	0.1°C
Measuring rate	from 60s to 24h
Memory	4,000 samples
Measuring mode	automatic with loop, start/stop or start with set measuring rate
Battery life	up to 2 years (for 15 minute measuring rate) battery replacement by user
Logger housing	suitable for food products
Protection class	IP 67
Calibration certificate	possible according to ISO 9001-2000
Start/Stop	manual Start/Stop button

Temperature Data Logger EBI-6



Applications

- | | | |
|--|--|---|
| <ul style="list-style-type: none"> • temperature control • transport | <ul style="list-style-type: none"> • temperature chambers • cooling chambers | <ul style="list-style-type: none"> • storage |
|--|--|---|

Attributes

- | | | |
|---|--|---|
| <ul style="list-style-type: none"> • compact and handy • waterproof IP 67 | <ul style="list-style-type: none"> • optical alarm • replaceable battery | <ul style="list-style-type: none"> • evaluation software • good price/performance ratio |
|---|--|---|

Description	Type	Part No.
Temperature logger	EBI-6	1600-0000
Data logger set	Type	Part No.
6 data loggers EBI-6 incl. interface, software, installation assembly with lock and packaging	EBI-6-6	1600-0005
8 data loggers EBI-6 incl. interface, software, installation assembly with lock and packaging	EBI-6-8	1600-0010
10 data loggers EBI-6 incl. interface, software, installation assembly with lock and packaging	EBI-6-10	1600-0015

Temperature Data Logger

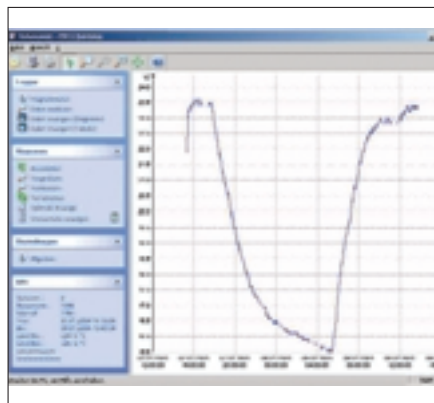
Accessories for EBI-6

Software EBI-Quicklog



EBI-6-Set

Complete set consisting of 6, 8 or 10 data loggers, installation assembly, interface and software EBI-Quicklog. Graphical or tabular display of the temperature curve, log printout (with computer and printer), scanning and enlargement of curves.



Software EBI-Quicklog

- PC with MS Windows 9x, NT 4.0, 2000, ME or XP
- CD drive
- Printer
- xx loggers



Penetration probe EBI-6-FUE

- Needle length 50mm, pointed
- Cable length: 1m
- PUR cable
- Stainless steel needle Ø 3mm
- Temperature range -30°C to +50°C

RS 232 Interface Cable and Transport Case



Interface EBI-6-RS 232

Interface



Transport case EBI-6-KOF

for up to 10 data loggers



Start/Stop button EBI-6-SST

Manual Start/Stop button

Accessories	Type	Part No.
Transport case for up to 10 loggers & accessories	EBI-6-KOF	1600-0035
2-point calibration and certificate (-20°C und 0°C)	ISO-Zertifikat	1600-0009
RS 232 Interface	EBI-6-RS 232	1600-0020
Evaluation software for EBI-6	EBI-Quicklog	1600-0025
Replacement battery for EBI-6 (CR 3032)	EBI-6-BAT	1600-0040
Penetration probe	EBI-6-FUE	1600-0050
Manual Start/Stop button	EBI-6-SST	1600-0045
USB adapter	EBI-KSY-USB	1900-0100