



Visit Us on the Web at [www.chatillon.com](http://www.chatillon.com)

# DG Series High Capacity Mechanical Force Gauge

Specification Sheet  
SS-FM-3002-0904  
September 2004

The CHATILLON® DG Series mechanical force gauge is ideal for a wide range of force testing applications up to 500 lbf (2.5 kN). Based on our popular DPPH Series force gauge, the DG Series features a larger, 2.25-inch dial for improved resolution and readability, peak hold button, durable plastic housing, universal mounting plate, ergonomic shape and improved accuracy of  $\pm 0.5\%$  of full scale. The DG gauge is an excellent, economical solution for tensile or compression testing.

The DG Series may be used as a hand-held device or equipped with an optional handle set for two-hand operation. It is ideal for test stand applications, and when combined with the MT500 Series mechanical test stand, offers you a versatile, economic test system with a capacity of up to 500 lbf (2.5 kN).

The DG Series features an easy to read concentric dial that measures clockwise only. Dial rotates 360-degrees for taring. A peak hold switch captures peak readings and can be easily and quickly returned to zero. A mechanical overload feature protects the gauge from damage. Available in lbf, kgf or N units of measure. DG Series gauges come complete with protective carrying case and a set of stainless steel attachments. A Certificate of Calibration with NIST Data is supplied standard.

## Features

- Eight Capacities
- Tensile (Pull) and Compression (Push) Testing
- Intrinsically Safe
- Tare Ring
- Peak Load Switch
- Universal Mounting
- NIST Calibration with Data
- 2 Year Warranty

## Specifications

<b>Accuracy:</b>	$\pm 0.5\%$ of Full Scale
<b>Overload Capacity:</b>	110% of Rated Capacity
<b>Maximum Overload:</b>	150% of Rated Capacity
<b>Tare Capacity:</b>	10% of Rated Capacity
<b>Dial Resolution:</b>	0.5% of Full Scale
<b>Deflection:</b>	10mm (.394 inches) at Full Scale
<b>Operating Temperature:</b>	40°F to 110°F (5°C to 45°C)
<b>Instrument Weight:</b>	4.7 lbs (2.12 kg)
<b>Shipping Weight:</b>	8.4 lbs (3.80 kg)

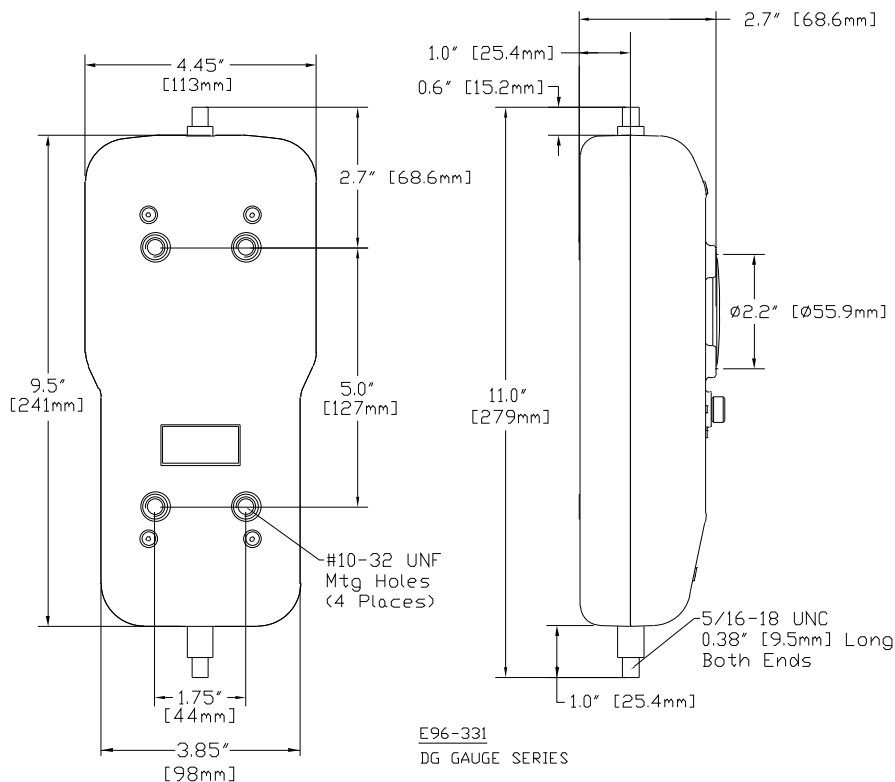


**You Get More with Your CHATILLON Gauge.**

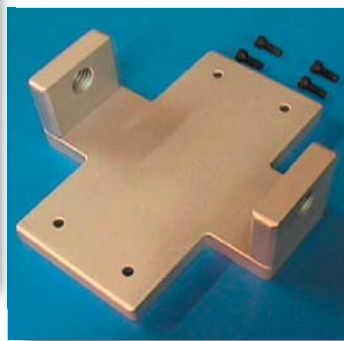


A registered trademark of AMETEK Inc.

## Dimensions - DG Series



DG Series force gauge shown with optional Handle Set Assembly (p/n SPK-DG-Handle).



Optional Handle Set Assembly (p/n SPK-DG-Handle).

## Ordering

### Decimal Dial (LBF)

Model	Capacity x Resolution
DG-200	200 x 1.0 lbf
DG-300	300 x 1.5 lbf
DG-400	400 x 2.0 lbf
DG-500	500 x 2.5 lbf

### Decimal Dial (KGF)

Model	Capacity x Resolution
DG-100KG	100 x 0.50 kgf
DG-250KG	250 x 1.25 kgf

### S.I. Dials (Newtons)

Model	Capacity x Resolution
DG-1000N	1000 x 5.0 N
DG-2500N	2500 x 12.5 N

## Accessories

### Standard Accessories

Part No.	Description
SPK-FMG-008C	Chisel Point
SPK-FMG-009B	Point
SPK-FMG-010B	Notch
SPK-FMG-011B	Flat
SPK-FMG-012C	Hook, Stationary
SPK-FMG-013B	Extension Rod, 6-inch
NC002728	Carrying Case
NC002737	Operator's Manual

### Optional Accessories

Part No.	Description
ML3868	Hook, Swivel
NC002500	Hook, with Clasp
SPK-DG-Handle	Handle Set Assembly
SPK-DG-TCM-TCD	Adapter, TCM/TCD Stand
SPK-DG-HTC	Adapter, HTC Stand
SPK-DG-TT	Adapter, TT Tester
SPK-MT-0005	Adapter, MT Stand
SPK-DG-LTCM	Adapter, LTCM-100 Stand