

# PRESSURE HANDLER® ATM

## SALES GUIDE



### INTRODUCTION

Drain-All No-loss condensate traps provide unique, high quality, energy efficient, reliable product solutions for draining and moving liquids such as: (1) condensate removal from compressed air systems, (2) oils and lubricants from manufacturing or test equipment, and (3) liquids from atmospheric and vacuum systems. Drain-All condensate traps are produced under a certified ISO 9001 Quality Management System to ensure the product exceeds customer expectations.

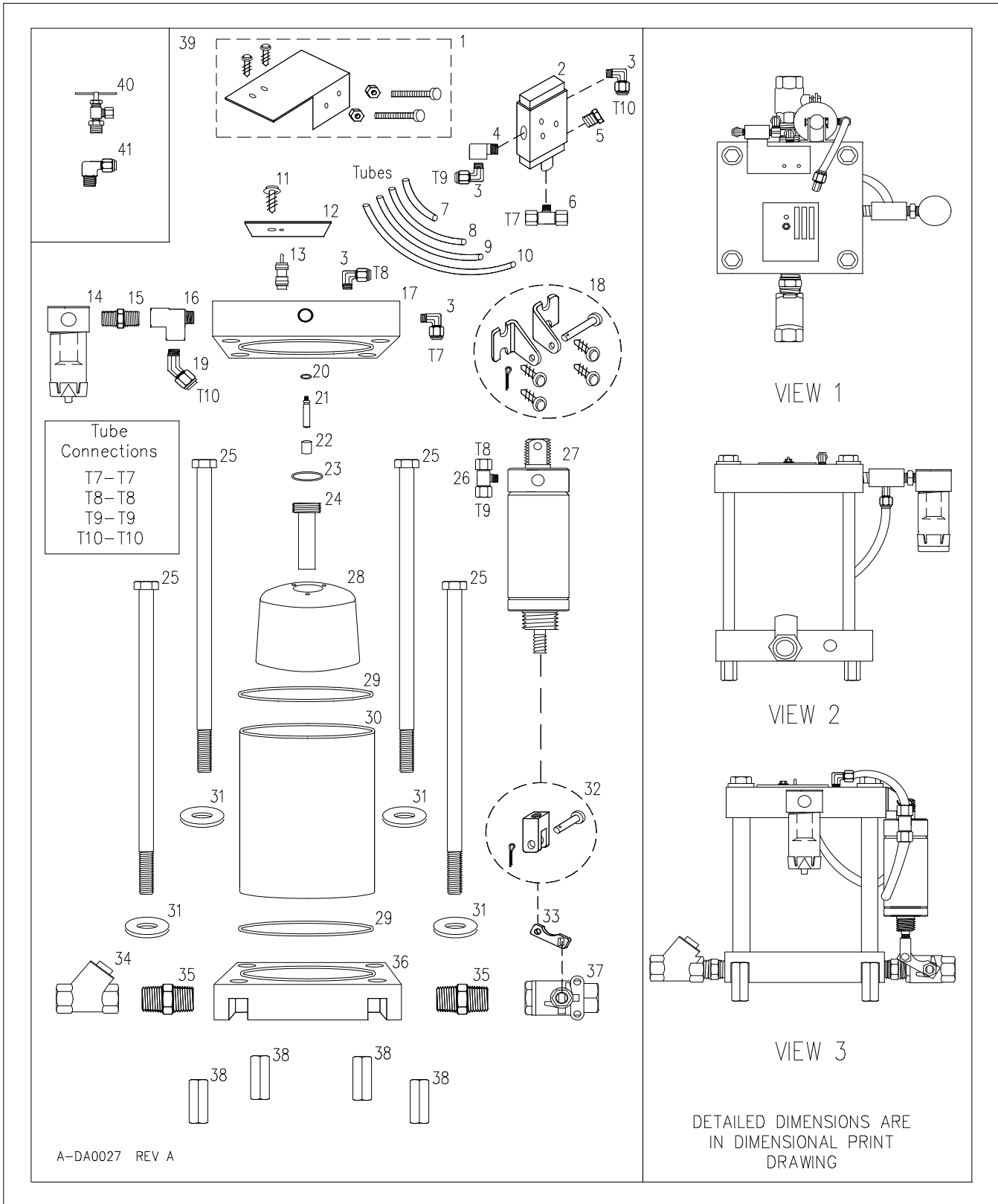
Drain-All products are industrially robust, require little maintenance and since they do not require any electrical connections, can be easily installed on equipment at any point in a system. The unique design maintains a liquid barrier inside the trap which prevents the escape of costly process gas. As a result, no-loss condensate traps provide energy savings when compared to timer drains and manual valves. These patented devices are backed by an excellent warranty and a strong technical support staff who are available to assist customers in developing engineered solutions for all of their liquid drainage problems.

The Drain-All product line includes a wide array of products, options and accessories which enable customers to customize their particular liquid drainage systems. The Drain-All condensate drains are compatible with all manufactures of compressors, aftercoolers, filters/separators, receivers and dryers.

| SPECIFICATIONS                       |                   |
|--------------------------------------|-------------------|
| Part Number                          | <b>PH50-0GAAA</b> |
| Max Liquid Temp - °F (°C)            | 170 (76.7)        |
| Max Liquid Pressure – PSIG (BARG)    | Atmospheric       |
| Control Air Min – PSIG (BARG)        | 80 (5.5)          |
| Control Air Max – PSIG (BARG)        | 130 (9.0)         |
| Ht – inches (cm)                     | 11 (27.9)         |
| Width – inches (cm)                  | 10-3/4 (27.3)     |
| Depth (Inlet/BV) – inches (cm)       | 13-1/2 (34.3)     |
| Inlet / Outlet – NPT                 | 1/2               |
| Control Air – NPT                    | 1/4               |
| Balance Line – NPT                   | N/A               |
| Max Capacity @ 110 PSI - GPM (kg/hr) | 1.5 (340) *       |
| Weight – LBS (KG)                    | 22 (10.0)         |

\* Varies with pressure/piping

# COMPONENT PARTS DRAWING



# PARTS & MATERIALS OF CONSTRUCTION

| CODE | PART # | ITEM                                  | DESCRIPTION/REMARKS                                       | Qty |
|------|--------|---------------------------------------|---|-----|
| 1    | 300775 | Valve Attachment Kit                  | Includes:   | 1   |
|      |        |                                       | (1) Valve Attachment Bracket-Stainless Steel              |     |
|      |        |                                       | (2) Screws-Zinc Plated Steel                              |     |
|      |        |                                       | (2) Screws,Self Tapping- Zinc Plated Steel                |     |
|      |        |                                       | (2) Nuts-Zinc Plated Steel                                |     |
| 2    | 300760 | 3-Way Valve                           | Black Enamel Finished Aluminum                            | 1   |
| 3    | 301000 | Elbow Fitting                         | Brass   | 4   |
| 4    | 300128 | Elbow Fitting                         | Brass   | 1   |
| 5    | 301215 | Port Screen                           | Coated Steel Body, Bronze Screen                          | 1   |
| 6    | 101000 | Screen Kit Assembly                   | Brass Tee, Aluminum disk, (2) SS Screens                  | 1   |
| 7    | 350351 | Control Air Tube, 1/4" Dia x 3.375" L | Nylon   | 1   |
| 8    | 350354 | Control Air Tube, 1/4" Dia x 4.0" L   | Nylon   | 1   |
| 9    | 350352 | Control Air Tube, 1/4" Dia x 7" L     | Nylon   | 1   |
| 10   | 350357 | Control Air Tube, 1/4" Dia x 10" L    | Nylon   | 1   |
| 11   | 302500 | Screw, Self-Tapping, #10 x 5/8" L     | Zinc Plated Steel   | 1   |
| 12   | 302806 | Name Plate                            | Aluminum  | 1   |
| 13   | 300600 | Push to Test Button                   | Brass   | 1   |
| 14   | 300700 | Control Air Filter Assembly           | Aluminum Head   | 1   |
| 15   | 300800 | Hex Nipple                            | Brass   | 1   |
| 16   | 301127 | Tee Fitting                           | Brass   | 1   |
| 17   | 170100 | Head                                  | Aluminum  | 1   |
| 18   | 300301 | Cylinder Mount Kit                    | Includes:   | 1   |
|      |        |                                       | (2) Brackets-Electroless Nickel Plated                    |     |
|      |        |                                       | (4) Screws-Zinc Plated Steel                              |     |
|      |        |                                       | (1) Mount Pin-Electroless Nickel Plated                   |     |
|      |        |                                       | (1) Cotter Pin-Stainless Steel                            |     |
| 19   | 301210 | Elbow Fitting                         | Brass   | 1   |
| 20   | 302210 | Valve Stem O-ring                     | Viton, Brown  | 1   |
| 21   | 100730 | Valve Stem, 2.235" L                  | O-ring Seal, Aluminum                                     | 1   |
| 22   | 400100 | Inner Magnet                          | Ceramic with Viton Ends and Covering                      | 1   |
| 23   | 302215 | Center Tube O-ring                    | Viton, Brown  | 1   |
| 24   | 200170 | Center Tube, 4.5" L                   | O-ring Seal, Aluminum                                     | 1   |
| 25   | 302270 | Hex Bolt                              | Zinc Plated Steel   | 4   |
| 26   | 301100 | Tee Fitting                           | Brass   | 1   |
| 27   | 300314 | Pneumatic Cylinder, 2" Dia            | 40 - 130 PSI, Stainless Steel Body and Rod, Aluminum Ends | 1   |
| 28   | 100480 | Float                                 | Polyurethane, Bullet Shaped                               | 1   |
| 29   | 302200 | Sleeve O-ring                         | Viton, Brown  | 2   |
| 30   | 100300 | Sleeve, .125" TK                      | Epoxy Fiberglass, Translucent                             | 1   |
| 31   | 301570 | Washer                                | Zinc Plated Steel   | 4   |
| 32   | 300292 |                                       | Includes:   | 1   |
|      |        |                                       | (1) Clevis-Electroless Nickel Plated                      |     |
|      |        |                                       | (1) Clevis Pin-Electroless Nickel Plated                  |     |
|      |        |                                       | (1) Cotter Pin-Stainless Steel                            |     |
| 33   | 100807 | Control Lever                         | Stainless Steel for 1/2" NPT Ball Valve                   | 1   |
| 34   | 300250 | Check Valve, 1/2" NPT                 | Brass   | 1   |
| 35   | 300900 | Hex Nipple                            | Brass   | 2   |
| 36   | 170200 | Base                                  | Aluminum  | 1   |
| 37   | 300207 | Heavy Duty Ball Valve, 1/2" NPT       | Double O-ring Viton Stem Seals, Nickel Plated Brass       | 1   |
| 38   | 302370 | Coupling Nut                          | Zinc Plated Steel   | 4   |
| 39   | 351135 | Installation Kit                      | Includes:   | 1   |
| 40   |        |                                       | (1) Needle Valve-Brass                                    |     |
| 41   |        |                                       | (1) Elbow Fitting-Brass                                   |     |

# DIMENSIONAL PRINT

