

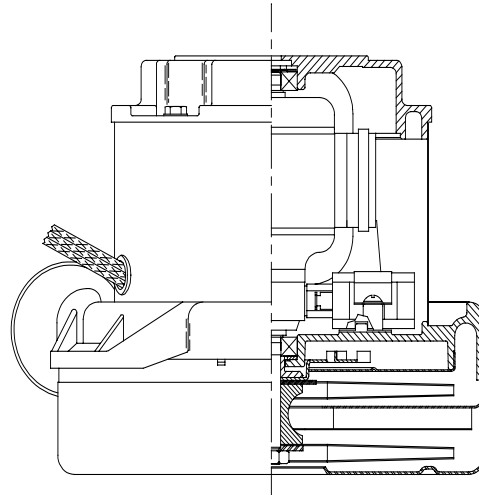


DESCRIPTION

- Two stage
- Single speed
- 7.2"/183mm diameter
- 240 volts
- Double ball bearings
- Tangential bypass discharge
- Aluminum fan end bracket
- Aluminum commutator bracket

DESIGN APPLICATION

- Equipment operating in environments which require separation of working air from motor ventilating air
- Designed to handle clean, dry, filtered air only

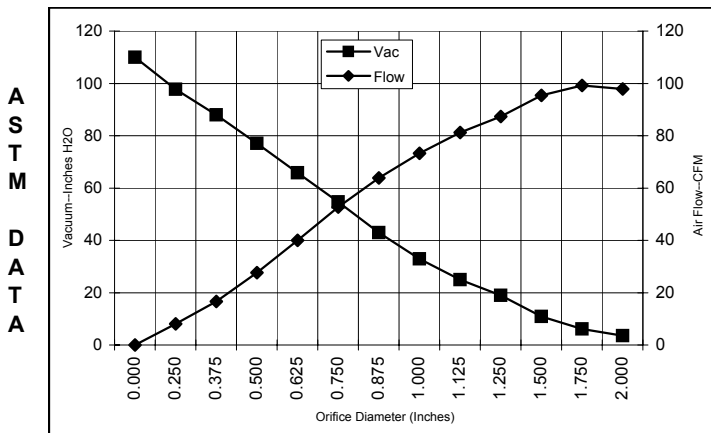


SPECIAL FEATURES

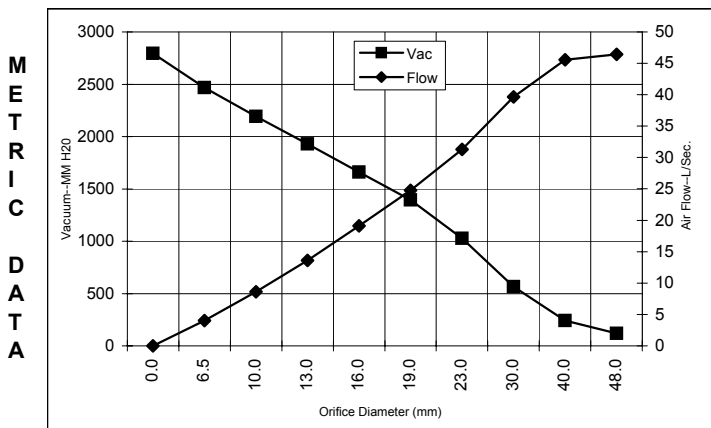
- Suitable for 240 volt operation, 50/60 Hz
- Provision for grounding
- Epoxy painted fan case
- UL recognized, category PRGY2 (E47185)
- The Lamb Electric vacuum motor line offers a wide range of performance levels to meet design needs

TYPICAL MOTOR PERFORMANCE.*

(At 240 volts, 60Hz, test data is corrected to standard conditions of 29.92 Hg, 68° F.)



| Orifice (Inches) | Amps | Watts (In) | RPM | Vac (In.H2O) | Flow (CFM) | Air Watts |
|------------------|------|------------|-------|--------------|------------|-----------|
| 2.000 | 5.9 | 1282 | 15417 | 3.5 | 97.8 | 40 |
| 1.750 | 5.9 | 1280 | 15377 | 6.1 | 99.2 | 72 |
| 1.500 | 5.9 | 1279 | 15351 | 10.9 | 95.4 | 122 |
| 1.250 | 5.9 | 1278 | 15358 | 18.9 | 87.4 | 195 |
| 1.125 | 5.9 | 1272 | 15419 | 25.0 | 81.2 | 238 |
| 1.000 | 5.8 | 1259 | 15550 | 32.9 | 73.3 | 283 |
| 0.875 | 5.7 | 1241 | 15719 | 42.9 | 63.9 | 323 |
| 0.750 | 5.5 | 1209 | 16005 | 54.7 | 52.7 | 338 |
| 0.625 | 5.3 | 1146 | 16526 | 65.8 | 40.0 | 309 |
| 0.500 | 4.9 | 1071 | 17221 | 77.1 | 27.6 | 250 |
| 0.375 | 4.5 | 984 | 18087 | 87.9 | 16.6 | 171 |
| 0.250 | 4.1 | 903 | 18983 | 97.7 | 8.1 | 93 |
| 0.000 | 3.7 | 835 | 19980 | 110.0 | 0.0 | 0 |



| Orifice (mm) | Amps | Watts (In) | RPM | Vac (mm H2O) | Flow (L/Sec) | Air Watts |
|--------------|------|------------|-------|--------------|--------------|-----------|
| 48.0 | 5.9 | 1281 | 15399 | 118 | 46.5 | 54 |
| 40.0 | 5.9 | 1279 | 15359 | 240 | 45.6 | 107 |
| 30.0 | 5.9 | 1275 | 15392 | 565 | 39.6 | 219 |
| 23.0 | 5.8 | 1246 | 15677 | 1026 | 31.3 | 313 |
| 19.0 | 5.5 | 1208 | 16015 | 1395 | 24.8 | 337 |
| 16.0 | 5.3 | 1149 | 16505 | 1660 | 19.1 | 310 |
| 13.0 | 4.9 | 1079 | 17152 | 1930 | 13.6 | 256 |
| 10.0 | 4.5 | 997 | 17957 | 2192 | 8.6 | 183 |
| 6.5 | 4.1 | 907 | 18938 | 2469 | 4.0 | 97 |
| 0.0 | 3.7 | 835 | 19980 | 2794 | 0.0 | 0 |

Note: Metric performance data is calculated from the ASTM data above.

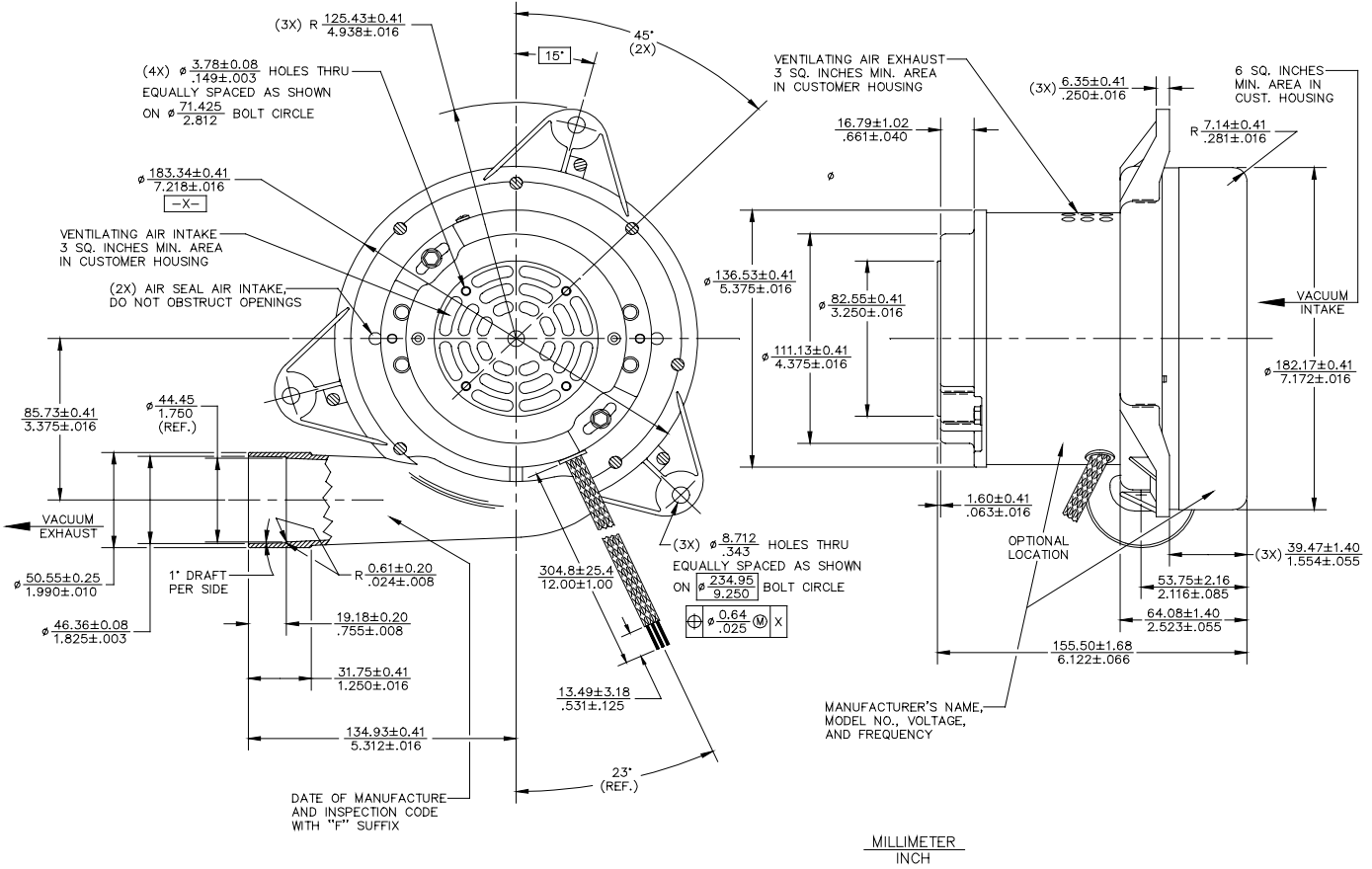
* Data represents performance of a typical motor sampled from a large production quantity. Individual motor data may vary due to normal manufacturing variations.

| | | | | |
|------------------------------|-------------------------------------|----------------------|------------------------------|----------------------------|
| Test Specs: 240 volts | Minimum Sealed Vacuum: 85.0" | ORIFICE: 7/8" | Minimum Vacuum: 39.0" | Maximum Watts: 1250 |
|------------------------------|-------------------------------------|----------------------|------------------------------|----------------------------|

DIMENSIONS

NOTES:

- 1. LEADS: POWER; #16 GA., ONE BLACK, ONE WHITE.
GROUND; #18 GA., GREEN WITH YELLOW STRIPE.



IMPORTANT NOTE: Pictorial and dimensional data are subject to change without notice. Contact factory for current revision levels.

WARNING - When using AMETEK Lamb Electric bypass motors in machines that come in contact with foam, liquid (including water), or other foreign substances, the machine must be designed and constructed to prevent those substances from reaching the fan system, motor housing, and electrical components. Lamb Electric vacuum motors other than hazardous duty models should not be applied in machines that come in contact with dry chemicals or other volatile materials. Failure to observe these precautions could cause flashing (depending on volatility) or electrical shock which could result in property damage and severe bodily injury, including death in extreme cases. All applications incorporating Lamb Electric motors should be submitted to appropriate organizations or agencies for testing specifically related to the safety of your equipment.



Ross Brown Sales Pty Ltd

ABN 28 000 690 362
Phone: 612 9899 2744 Fax: 612 9899 4233
Email: sales@rossbrownsales.com.au
Web: www.rossbrownsales.com.au

Issued: March, 1998